

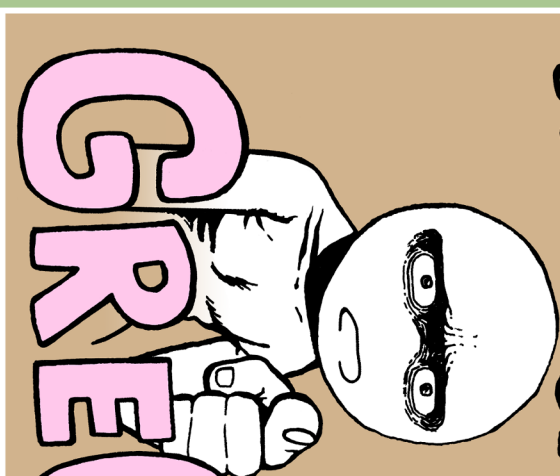
YOU JUST KEEP  
GETTING CUTER!



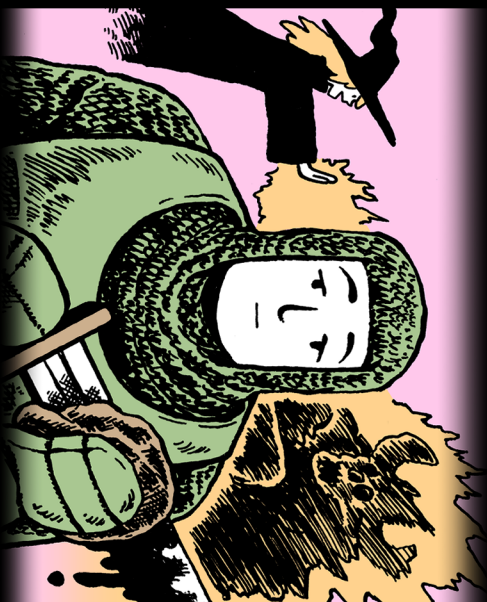
YOU INSPIRE ME!



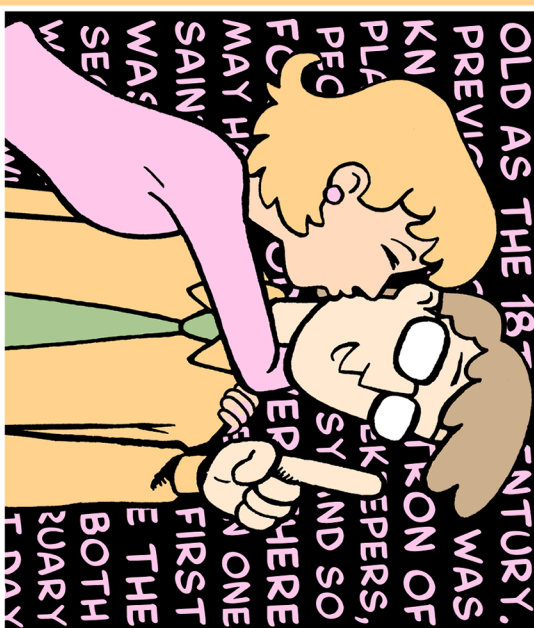
YOU'RE OKAY  
GREG



I'D KILL FOR YOU  
VALENTINE



ACTUALLY, SAINT VALENTINE'S  
DESIGNATION AS THE PATRON  
SAINT OF LOVERS IS ONLY AS  
OLD AS THE 18th CENTURY.  
PREVIOUSLY, HE WAS  
KNOWN FOR HIS SKILL AS A  
PUNISHER OF CRIMINALS,  
SPECIFICALLY FOR HIS  
FACILITY IN TORTURING  
MAY HAVE BEEN THE FIRST  
SAINT TO BE ASSASSINATED.  
WAS THE FIRST TO BE  
SEVERED BY A SWORD.  
WHICH IS WHY HE IS THE  
PATRON OF BOTH  
VALENTINE'S DAY



WITH YOU BY  
MY SIDE, WELL...

NOW I  
CAN'T  
LOSE!  
(.com)